

We're proud to share with you our smallest Seakeeper to-date, the long-awaited Seakeeper 1 for boats ~23-30 feet (~7-9 meters) and up to ~5.5 tons. The newest model doesn't incorporate just one or two new features but a whole list of upgrades and benefits. Stabilization for small boats is officially here. If we had to pick one word to describe the Seakeeper 1 it would be: **REVOLUTIONARY**. But we couldn't just pick one. Here are a few more that define the new Seakeeper 1:

TINY

The Seakeeper 1 is our smallest, most radical product to-date. It's 35% smaller and 15% lighter than the Seakeeper 2, and with a height of only 15.68", deck installation under a seat is easier than ever.

CONNECTED

The Seakeeper 1 can be integrated with many Garmin, Simrad and Raymarine MFDs. Our shared partnerships with the electronics companies allow you to keep your helm how you envisioned it, without taking up additional space.

DYNAMIC

The Seakeeper 1 features a control keypad, called the ConnectBox, directly on top of the unit with the option of helm installation. This eliminates the need for the separate Seakeeper display, which could take up valuable space on the helm of a smaller boat.

QUIET

With a redesigned motor that's as quiet as a whisper, the Seakeeper 1 is our quietest unit yet!

MODERN

The Seakeeper 1 is the only unit to utilize vibration isolation, improving resilience to natural structure-borne vibration.

SIMPLE

The brake system on the Seakeeper 1 is completely hoseless and uses a single cylinder, engineered for enhanced performance and reliability.

ADAPTIVE

The Seakeeper 1 was designed with small boats in mind. The new design is flush mount, completely containing the unit with no part of the sphere hanging below the point of installation allowing for easier integration on small boats.

ALLURING

A fresh new look, including a window on the top, makes the Seakeeper 1 even more appealing for above-deck installation and for your owners to show off their coolest feature.

EFFICIENT

Like the Seakeeper 2 and Seakeeper 3 before it, the Seakeeper 1 relies solely on 12 VDC power, and thanks to the vacuum encapsulation, consumes only 55 Amps.

FAST

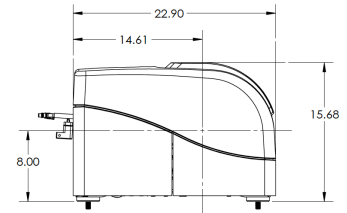
With a totally unique flywheel and smaller envelope, the Seakeeper 1 can spool up to stabilization in record time – just 15 minutes!

SEAKEEPER 1 SPECS

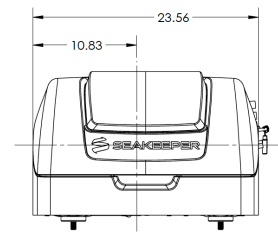


The Seakeeper 1 is designed to eliminate up to 95% of boat roll on recreational vessels ~23 to 30 feet (7-9 meters) or up to ~5.5 tons. It features a flush mount design for easier installation, runs exclusively on 12V DC power, has no outside appendages and can be installed virtually anywhere on board.

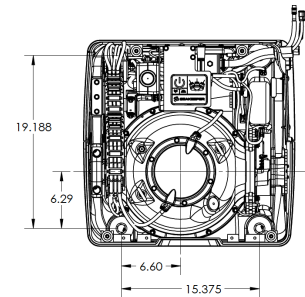
PORT VIEW



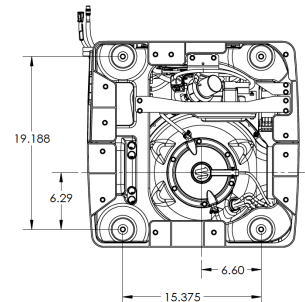
FRONT VIEW



TOP VIEW



BOTTOM VIEW



TECH SPECS

Rated Speed	9,750 RPM
Angular Momentum at Rated RPM	1,000 N-M-S
Max Anti-Rolling Torque at Rated RPM	2,620 N-M
Spool-up Time to Rated RPM	30 minutes (9,750 RPM)
Spool-up Time to Stabilization	15 minutes (7,310 RPM)
Spool-up Power	
DC Input	600 Watts Max
DC Input Voltage	12 VDC @ 55 Amps
Operating Power	
DC Control	300 - 600 Watts (Sea State Dependent)
DC Input Voltage	12 VDC @ 55 Amps
Weight	365 lbs (165 kg) Approximately
Envelope Dimensions	Length x Width x Height 22.9 L x 23.6 W x 15.7 H (Inches) 0.582 L x 0.598 W x 0.398 H (Meters)