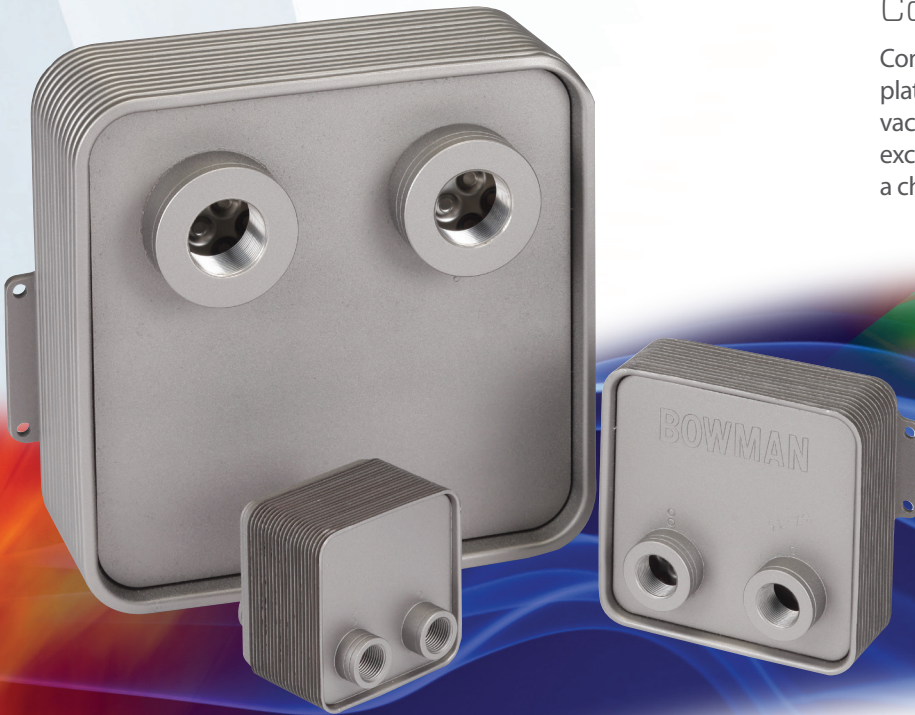


Inline Plate Heat Exchangers

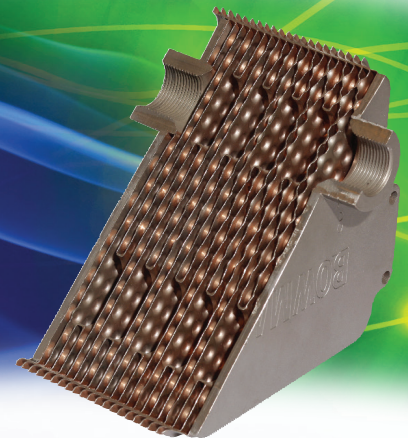
The compact, economical solution for efficient heat transfer



Bowman stainless steel Inline Plate heat exchangers provide a compact, efficient solution for a wide range of applications.

Compact design

Comprising a series of stainless steel heat transfer plates, two outer covers and four connections vacuum-brazed into an integral unit, these heat exchangers are available in a range of sizes and with a choice of brazing materials.



High efficiency heat transfer

Bowman Inline Plate units feature a uniquely designed flow arrangement with both fluid streams circulating in series through the heat exchanger, providing efficient heat transfer.

Easy in-line installation

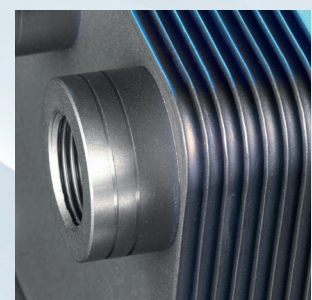
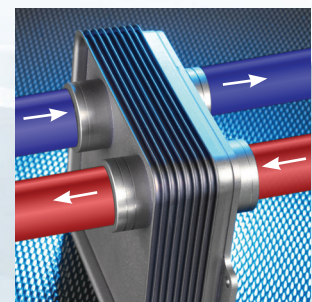
The unique design enables the inlet and outlet connections to be axially inline, so that the unit fits simply and neatly into pipework. For new installations, this feature plus the unit's compact, modern design can provide substantial space and cost savings.

High quality construction

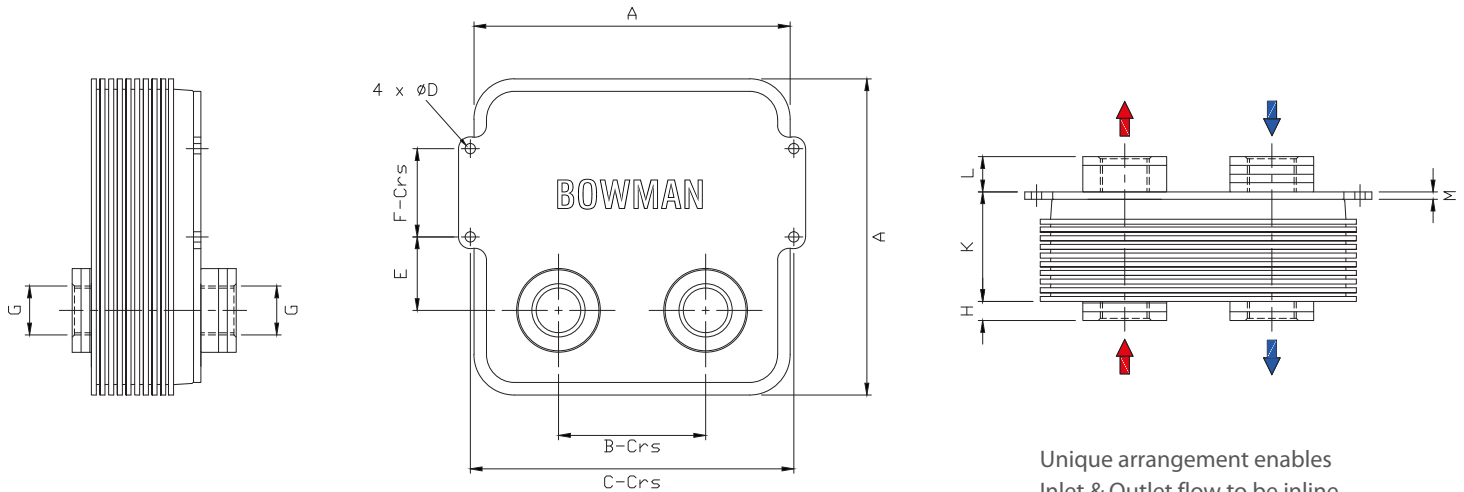
Manufactured from 316 stainless steel, to Bowman's renowned standards, these neat, compact units provide a high quality solution for efficient heat transfer.

Choice of brazing solutions

Whilst the plates of the standard product range are copper brazed, for more demanding or aggressive applications, a copper free brazed 316 stainless steel unit is available.



BOWMAN[®]
100 YEARS OF HEAT TRANSFER TECHNOLOGY



Unique arrangement enables Inlet & Outlet flow to be inline without any change of direction.

Copper Brazed	Copper Free Brazed	A mm	B mm	C mm	D mm	E mm	F mm	G BSP	H mm	K mm	L mm	M mm	Weight kg	Volume Per Side (Litres)
10-5	-	106	50	-	-	25	-	1/2"	11	24	16	3	0.8	0.05
10-9	10-9E	106	50	-	-	25	-	1/2"	11	37	16	3	0.9	0.11
10-13	-	106	50	-	-	25	-	1/2"	11	50	16	3	1.1	0.16
10-17	10-17E	106	50	-	-	25	-	1/2"	11	63	16	3	1.2	0.21
10-21	-	106	50	-	-	25	-	1/2"	11	76	16	3	1.3	0.26
10-25	-	106	50	-	-	25	-	1/2"	11	90	16	3	1.7	0.32
10-29	-	106	50	-	-	25	-	1/2"	11	103	16	3	2.0	0.37
15 Series														
15-5	15-5E	158	75	165	7	37.5	45	3/4"	12	34	20	4	2.5	0.18
15-9	15-9E	158	75	165	7	37.5	45	3/4"	12	54	20	4	2.9	0.36
15-13	15-13E	158	75	165	7	37.5	45	3/4"	12	74	20	4	3.3	0.55
15-17	-	158	75	165	7	37.5	45	3/4"	12	94	20	4	3.7	0.72
15-21	-	158	75	165	7	37.5	45	3/4"	12	112	20	4	4.1	0.90
15-25	15-25E	158	75	165	7	37.5	45	3/4"	12	132	20	4	4.6	1.09
15-29	-	158	75	165	7	37.5	45	3/4"	12	152	20	4	5.0	1.27
20 Series														
20-5	20-5E	215	100	220	7	50	60	1"	12	46	24	5	5.4	0.44
20-9	-	215	100	220	7	50	60	1"	12	70	24	5	6.1	0.88
20-13	20-13E	215	100	220	7	50	60	1"	12	94	24	5	6.8	1.32
20-17	20-17E	215	100	220	7	50	60	1"	12	118	24	5	7.6	1.76
20-21	-	215	100	220	7	50	60	1"	12	142	24	5	8.4	2.20
20-25	-	215	100	220	7	50	60	1"	12	166	24	5	9.2	2.64
20-29	20-29E	215	100	220	7	50	60	1"	12	169	24	5	10.2	3.08

Maximum working pressure 6 bar (please ensure a suitable pressure relief valve is fitted upstream of the heat exchanger to avoid going over the maximum working pressure and damaging the unit).

Maximum working temperature 185°C (110°C with water).

■ These products have been designed to operate with fuel containing ethanol which is incompatible with copper.

EJ Bowman (Birmingham) Ltd

Chester Street, Birmingham B6 4AP, UK
 Tel: +44 (0) 121 359 5401 Fax: +44 (0) 121 359 7495
 Email: sales@ej-bowman.com www.ej-bowman.com



EJ Bowman (Birmingham) Ltd reserve the right to change specifications, or remove models from the range without prior notice. Please check with the sales team for current availability.